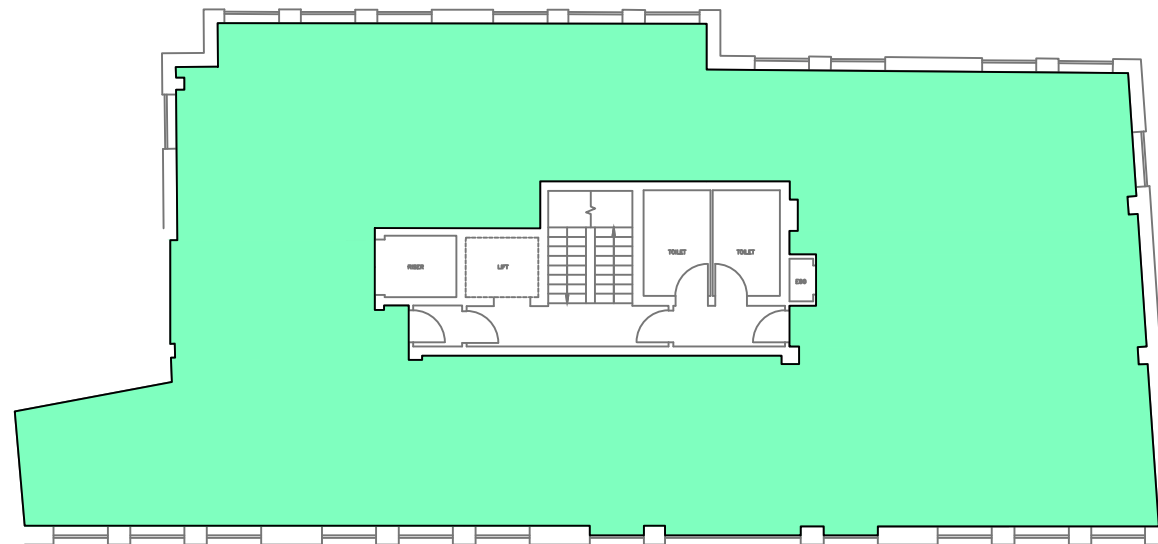


Net Internal Area Plan

OFFICE 294.8 sq m 3173 sq ft

TOTAL AREA: 294.8 sq m 3173 sq ft



SOUTHWARK BRIDGE ROAD

murphy London
 9 Devonshire Square
 London
 EC2M 4YF
Asset Services Phone: 020 3170 7026
 Fax: 020 3178 6642

www.murphyassetservices.co.uk

Project : 91-95 SOUTHWARK BRIDGE ROAD LONDON, SE1	
Description : Second Floor Area Plan	
Date : April 2011	Issue : 0
Drawing Number : UK003356-AP2	
Scaled for presentation purposes	

Condition of Site:	Note/Notes	Revisions		
Occupied Vacant Heavy Fit-Out Shell & Core Under Construction Cat A Fit-Out	This drawing complies with the 6th edition of the RICS code and indicates the extent of the areas quoted, produced to an accuracy commensurate with standard presentation scales. It is held in a scaled digital CAD format.	No.	Date	Description
		0	11/04/2011	First Drawing