
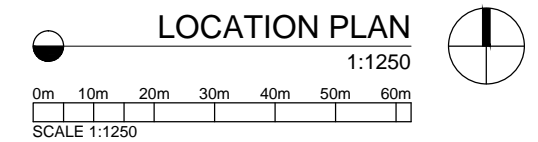
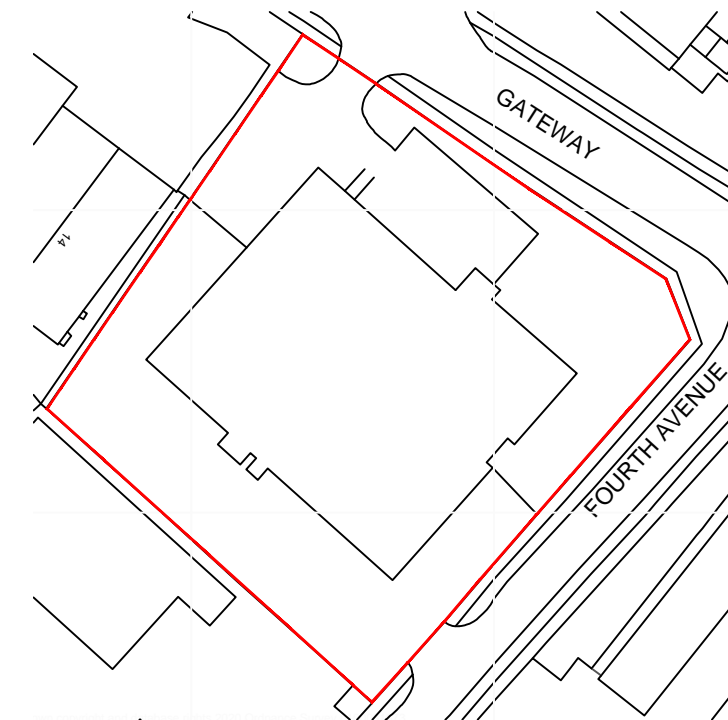
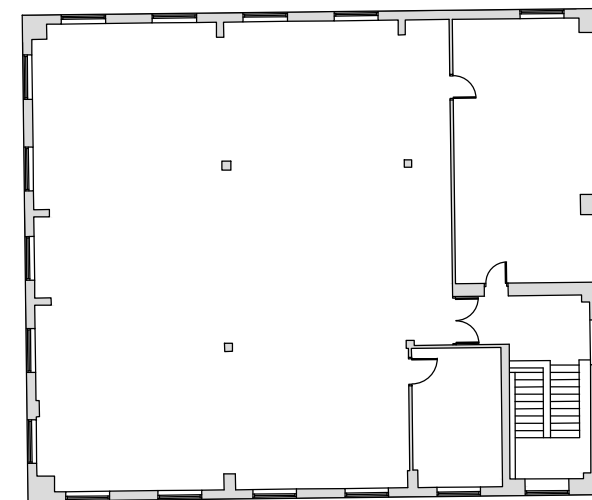
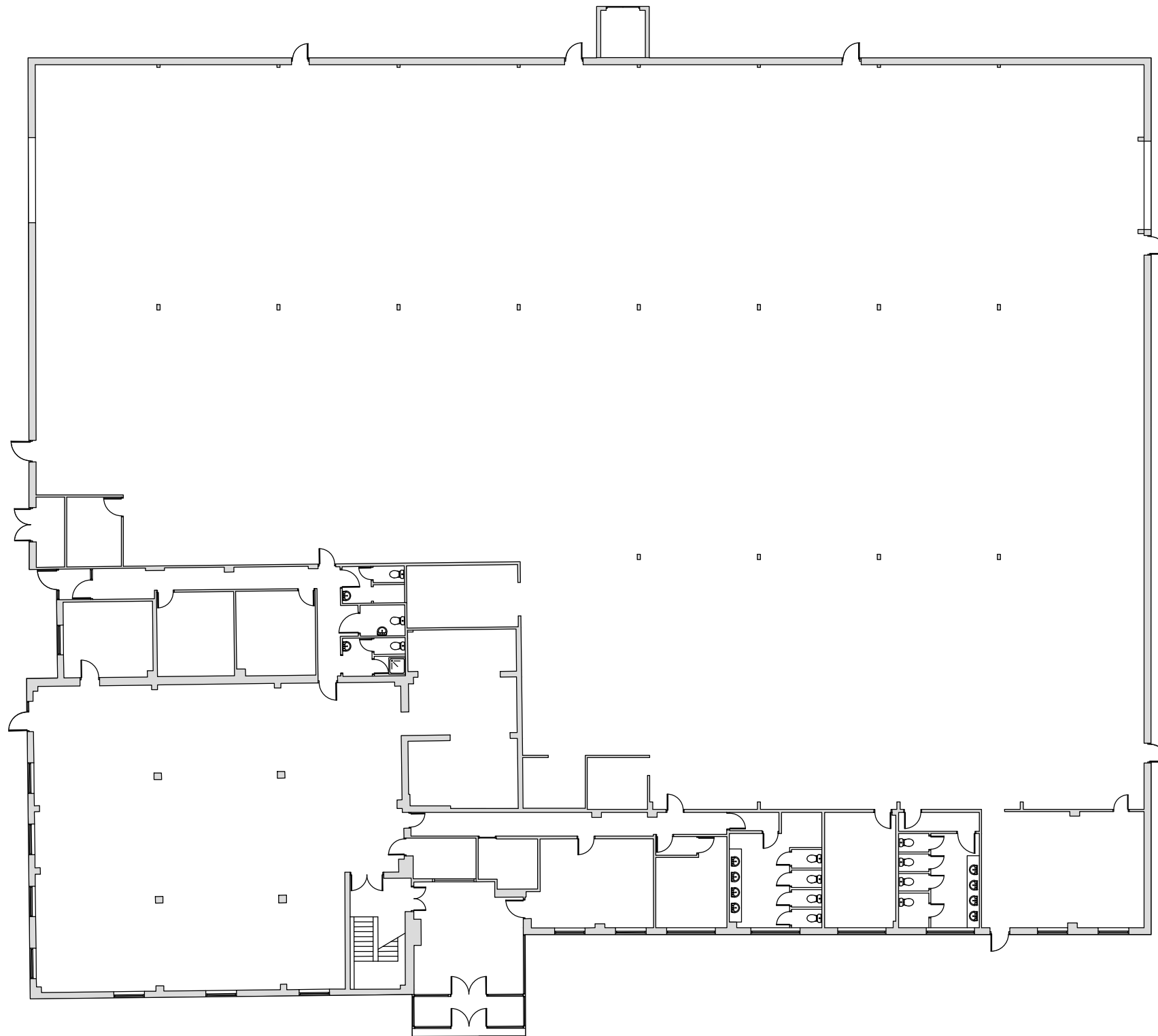


GENERAL NOTE
 This drawing is to be read in conjunction with all other relevant drawings, schedules and specifications issued.
 All interior dimensions including ceiling heights are taken to and from finished surfaces unless otherwise stated. All levels and dimensions must be checked on site.
 Any discrepancies with the information depicted in this drawing must be reported in writing. Responsibility cannot be accepted for alterations made to this drawing without prior permission.
 This drawing must not be photocopied, scaled or reproduced otherwise scale accuracy cannot be guaranteed.
 This drawing should not be used in any circumstances for any structural calculation or building construction / demolition work.

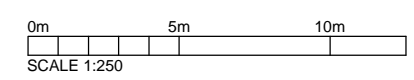
Land Registry Note
 This drawing has been created in accordance with the Land Registry Practice Guide 40.

 = Extent of demised premises



GROUND FLOOR
 1:250

FIRST FLOOR
 1:250



PROJECT TITLE

**ROCKWELL HOUSE, GATEWAY,
 CREWE, CW1 6YT**

DRAWING TITLE

LEASE PLAN

SCALE	SIZE	DRAWING
1:250		
1:1250	A3	267463
DRAWN	CHECKED	DATE
JB	PH	20/11/20

FOURWALLS™

SUITE 1.14, BUILDING THREE
 WATCHMOOR PARK, CAMBERLEY, GU15 3YL
 WWW.FOURWALLS-GROUP.COM

