

Net Internal Area Plan

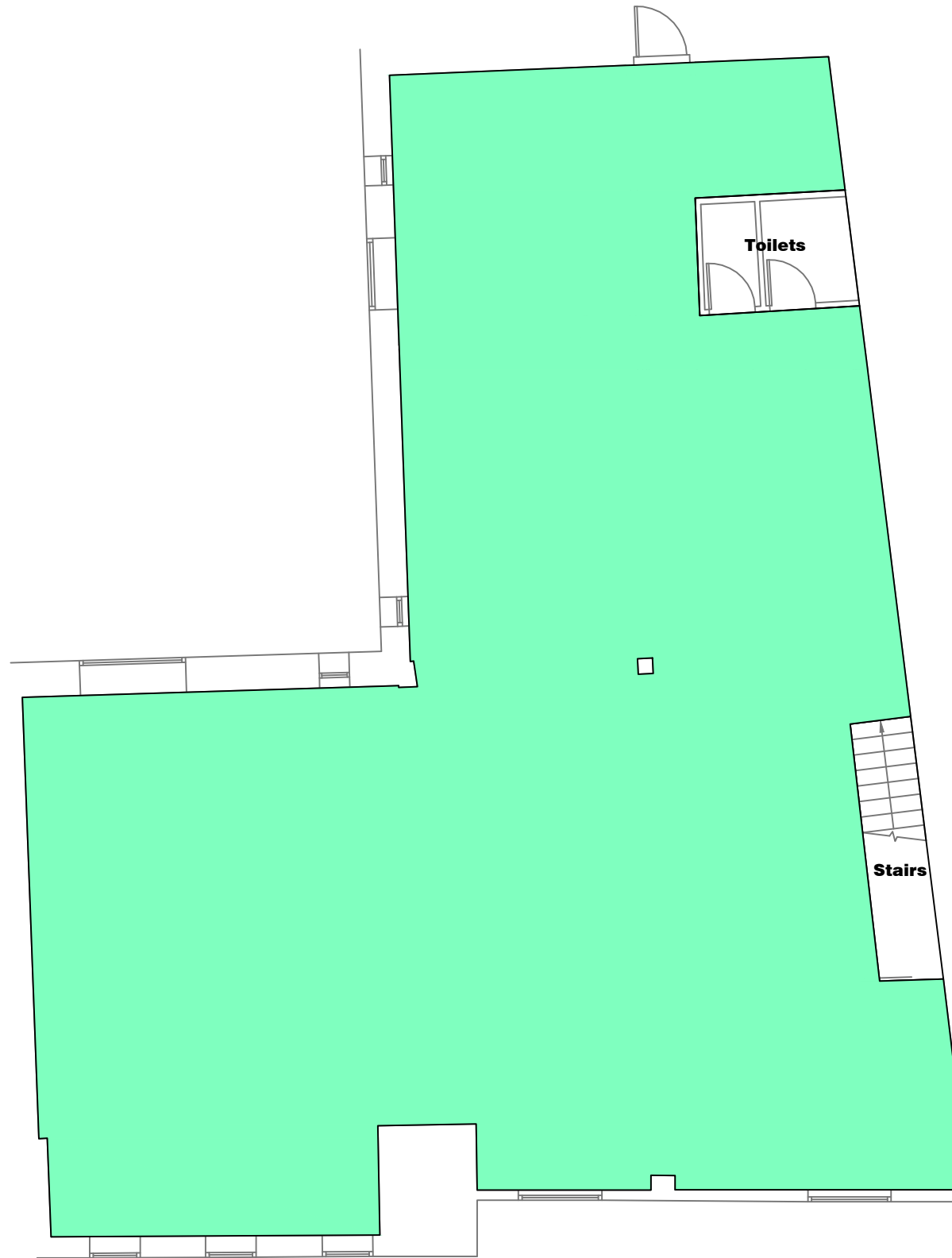
OFFICE 199.1 sq m 2143 sq ft

TOTAL AREA: 199.1 sq m 2143 sq ft

The following areas have been EXCLUDED from the OFFICE Area:

Stairs 4.5 sq m 48 sq ft

Toilets 5.0 sq m 54 sq ft



HIGH STREET

murphy London
 9 Devonshire Square
 London
 EC2M 4YF
Asset Services Phone: 020 3170 7026
 Fax: 020 3178 6642

www.murphyassetservices.co.uk

Project : 29 HIGH STREET	
St Mary Centre, THORNBURY, BS35	
Description : First Floor Area Plan	
Date : April 2011	Issue : 0
Drawing Number : UK002570-29HS-AP1	
Scaled for presentation purposes	

Condition of Site:	Note/Notes	Revisions		
Occupied Vacant Heavy Fit-Out Shell & Core Under Construction Cat A Fit-Out	This drawing complies with the 6th edition of the RICS code and indicates the extent of the areas quoted, produced to an accuracy commensurate with standard presentation scales. It is held in a scaled digital CAD format.	No.	Date	Description
		0	19/04/2011	First Drawing